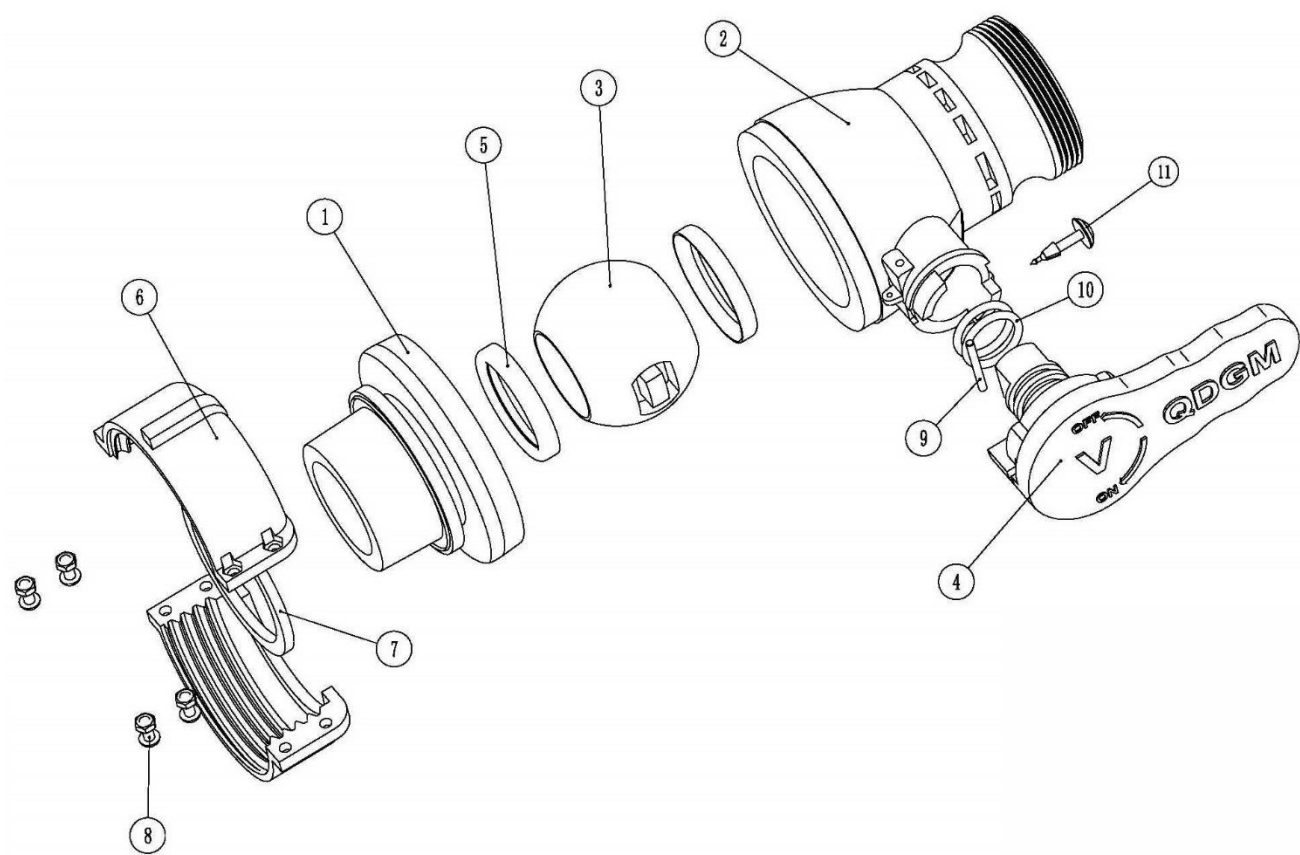


GM IV-2SC-QLEM/2

QC:

- 1. All valves are subjected to and must pass compressed air test to hold air internally for 3 hrs.
- 2. A sampling of valves (min.10 from each run) are subjected to the following:
Inner Stress Test
Drop Test
Leakproof Test
Vibration Test
Torque: 55-75 ft lb



GM IV-2SC-QLEM/2

75mm Aluminum Collar 2" NPT Ball
Valve LDPE Ball Seals EPDM Collar
Gasket

Part	QTY	Name	Material	OD	ID
1	1	Valve Body Lower	PP Copolymer		
2	1	Valve Body Upper	PP Copolymer		
3	1	Ball	PP		
4	1	Handle	PP GF30		
5	2	Ball Seal	LDPE		
6	1	Collar (2 pc assembly)	Aluminum Alloy		
7	1	Gasket	EPDM		
8	4	Bolt &Nut	Steel		
9	1	Handle Lock Pin	Steel		
10	2	O-Ring	EPDM		
11	1	Security Pin	PP GF30		